

LIGHTING:

Grid bars are at 5m; sockets are on trunking above the bars
40 grid and 20 floor level sockets (all 15A) terminate at 16A plugs.
Patch to dimmers using 15->16A jumpers
2 x 6way dimmer racks (2x15A sockets, fused 32mm 10A HRC) fed from 2 x 63A 1ph Ceeform
4 x Strand Quartet (Mk2) 15/25 650W T26
4 x Strand Quartet (Mk2) 22/40 650W T26
4 x Strand Cantata Fresnel 1200W T29
6 x PAR Can 1000W CP/62 MFL
DMX Control via Zero88 Frog

Working light is fluoro, no dimmable houselights

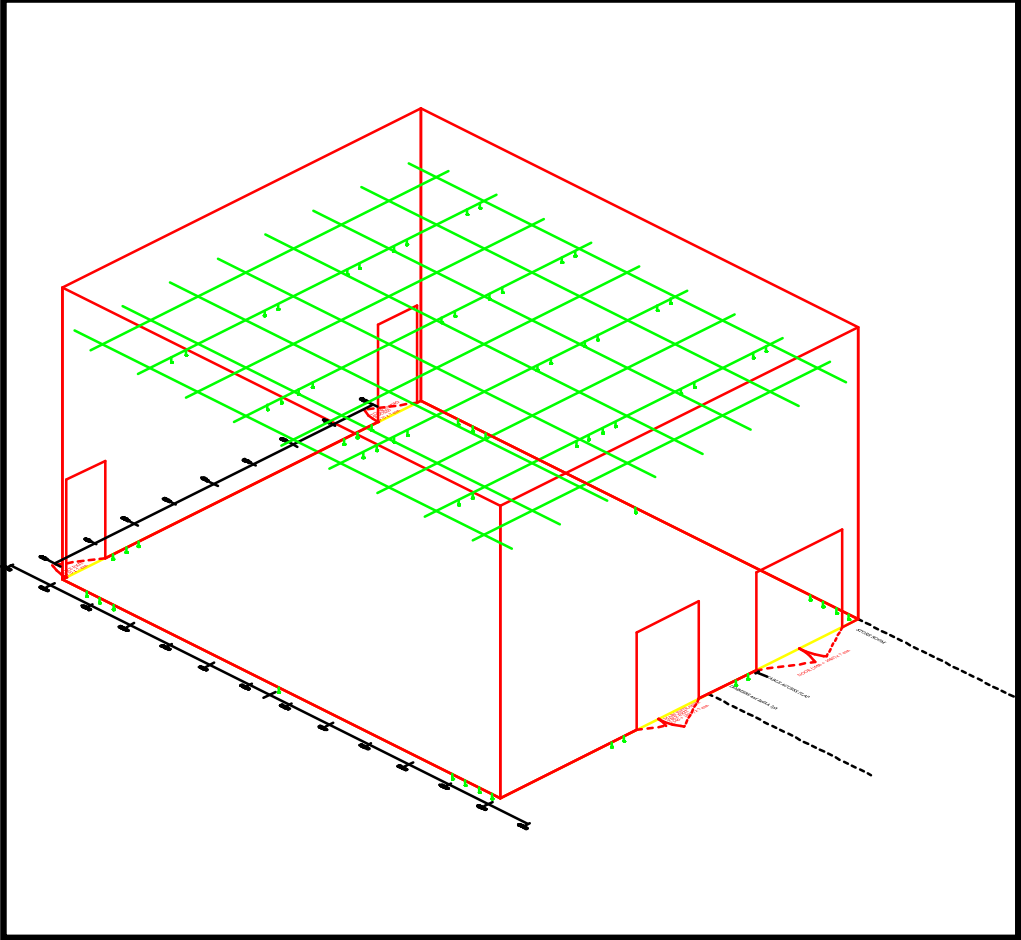
WARNING: SOCKET POSITIONS VERY APPROXIMATE

SOUND:

2 external speaker plus Neutrik Speakon leads
Shure microphones and cables
Wheelable rack containing:
- Spirit Folio FX8 8+2 mixing desk
- CD Player
- Minidisc player

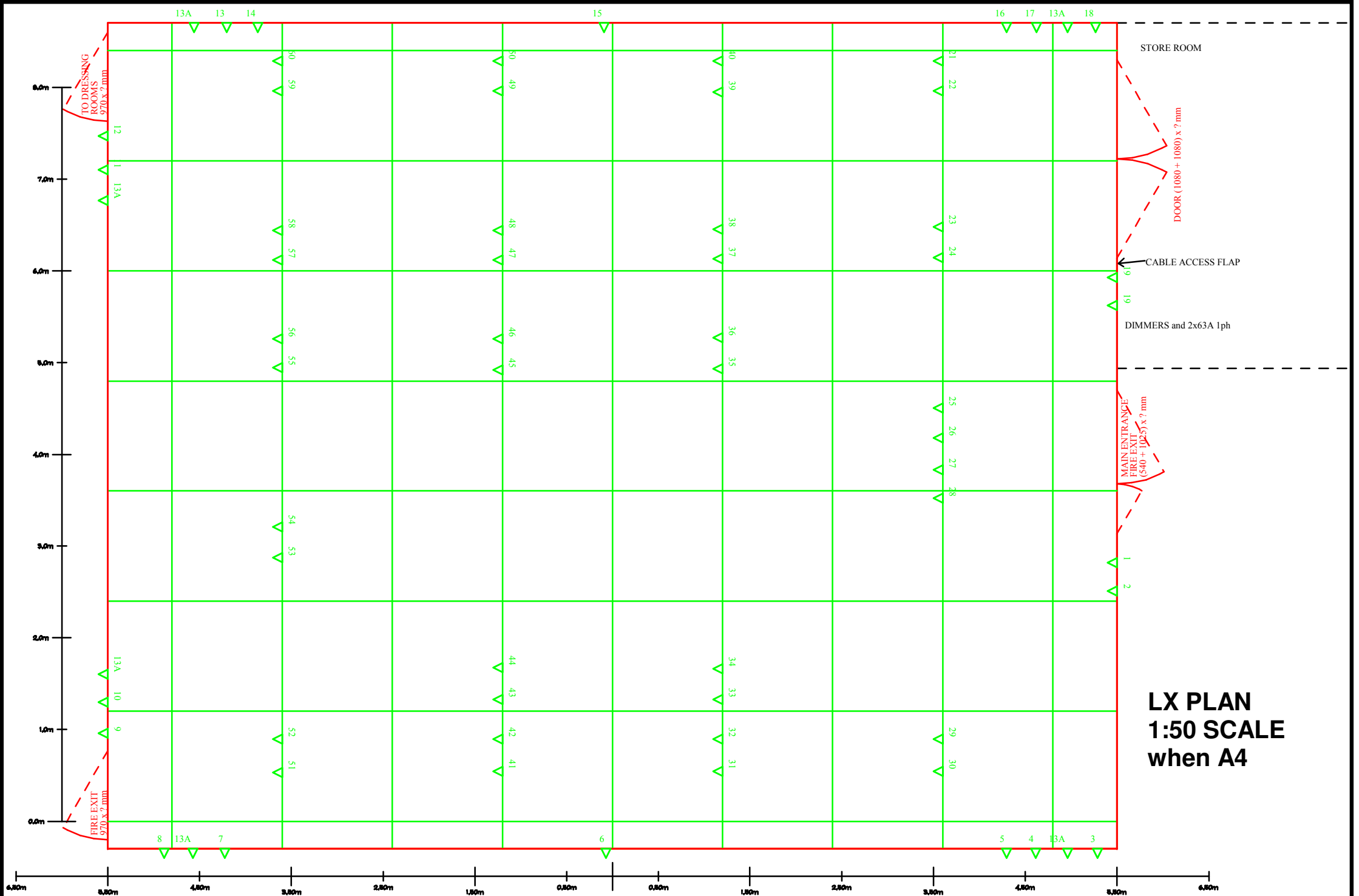
MISC:

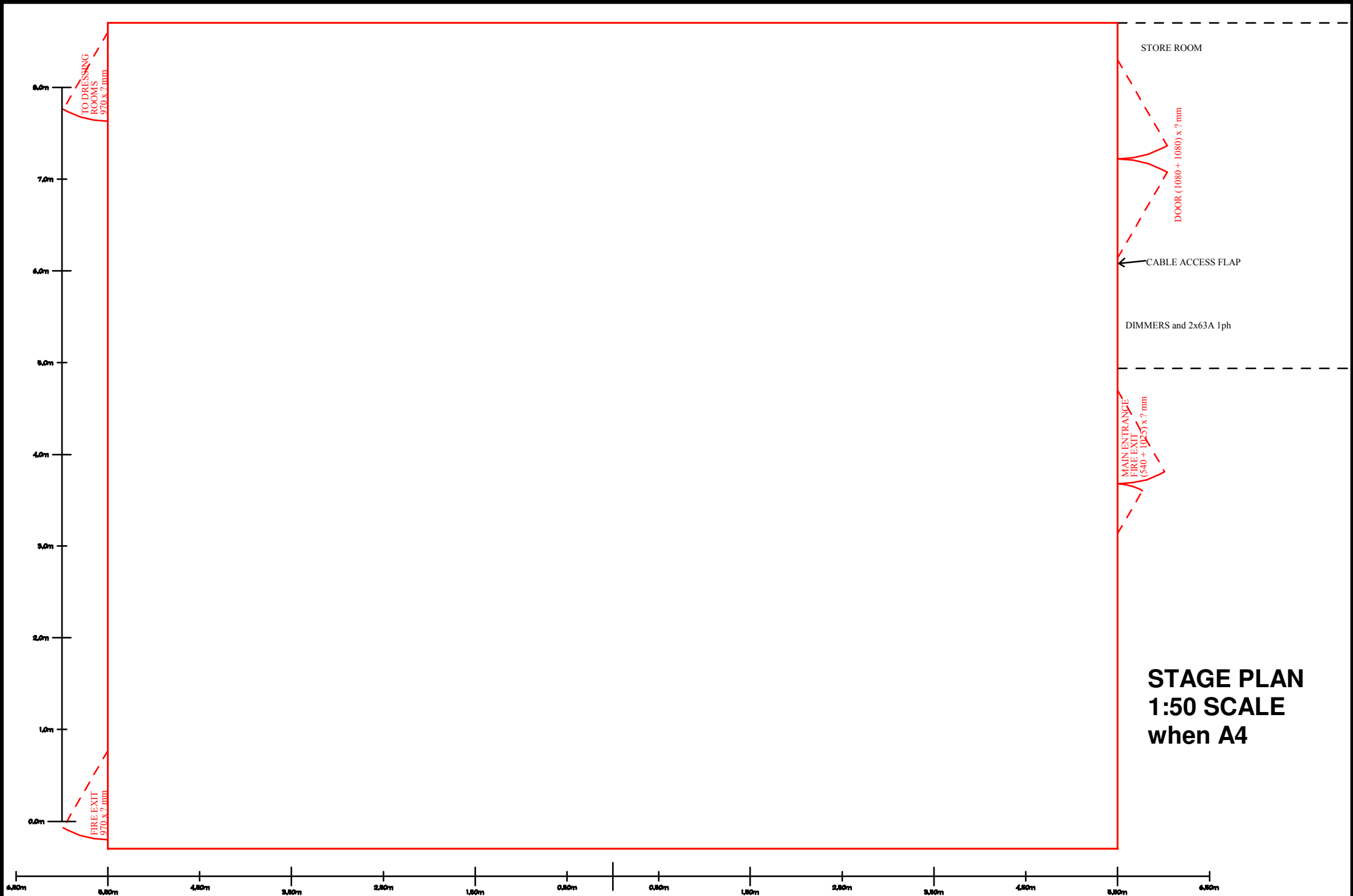
Venue has ? chairs
Venue has ?14? pieces of 2m x 1m staging
Walls are grid of uni-strut at horizontal and vertical spacing of 1.2m (aligns with lighting grid)
Each square contains an accoustic panel; there are 3 panels below grid height
Bottom 1.4m is normal wall with recessed radiators etc.
Grid and floor level network sockets
Venue has some form of air extraction
Dimmers might be Zero88 Betapack 2?



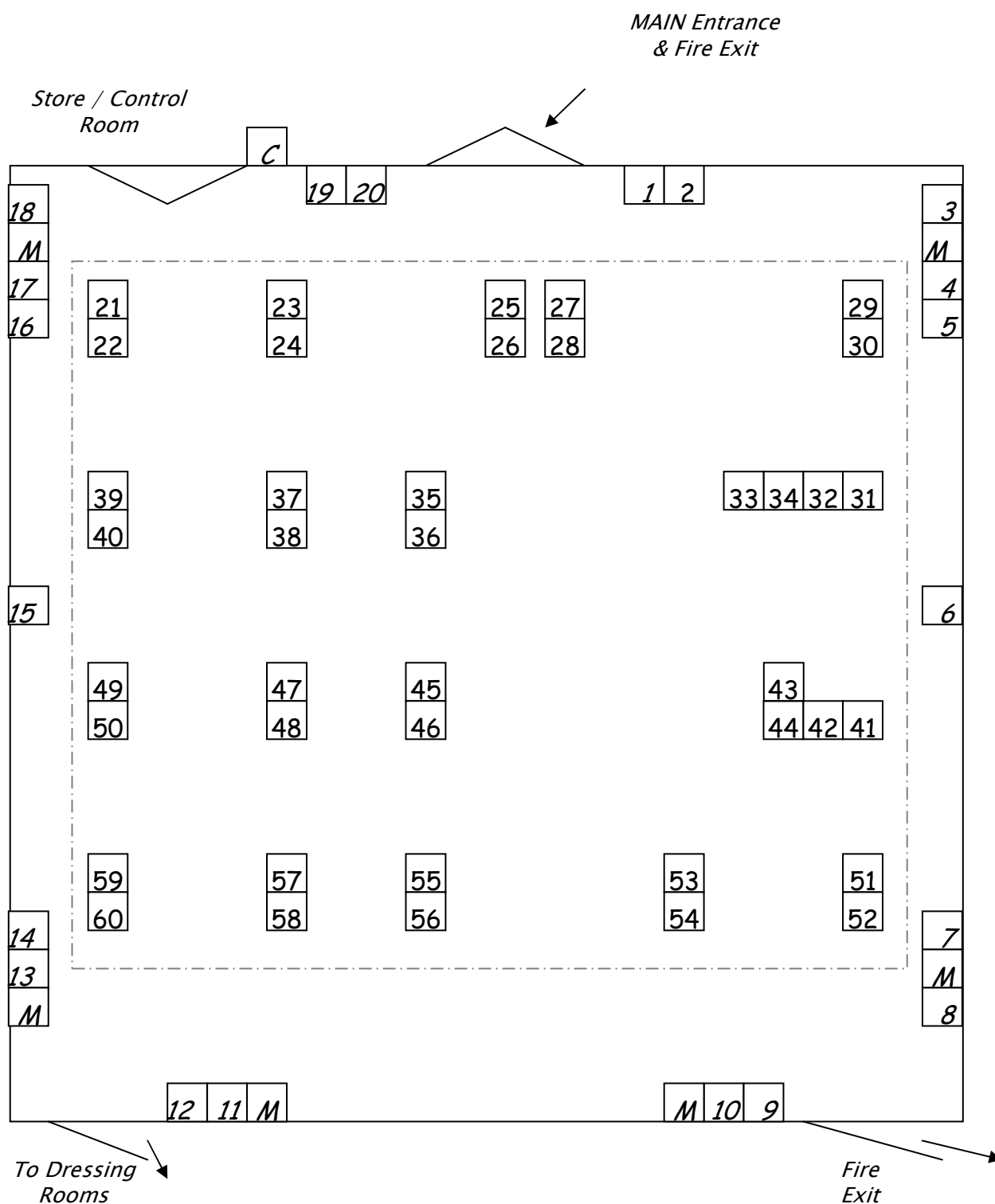
PRODUCTION:	
COMPANY:	
DATES:	
DIRECTOR:	
DESIGNER:	
LIGHTING DESIGNER:	

PRODUCTION:	
COMPANY:	
DATES:	
DIRECTOR:	
DESIGNER:	
LIGHTING DESIGNER:	





Faculty of English ~ Judith E. Wilson Drama Studio



M = DOUBLE 13Amp Mains sockets **C** = Cat flap/Cable Access

NB. SOCKETS within grey box are Ceiling mounted (above the grid)